

ÉTAGE 1

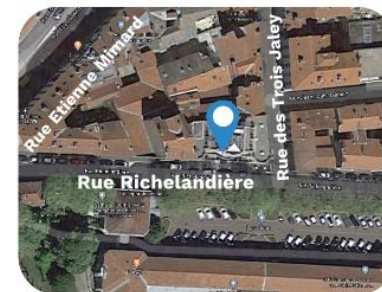
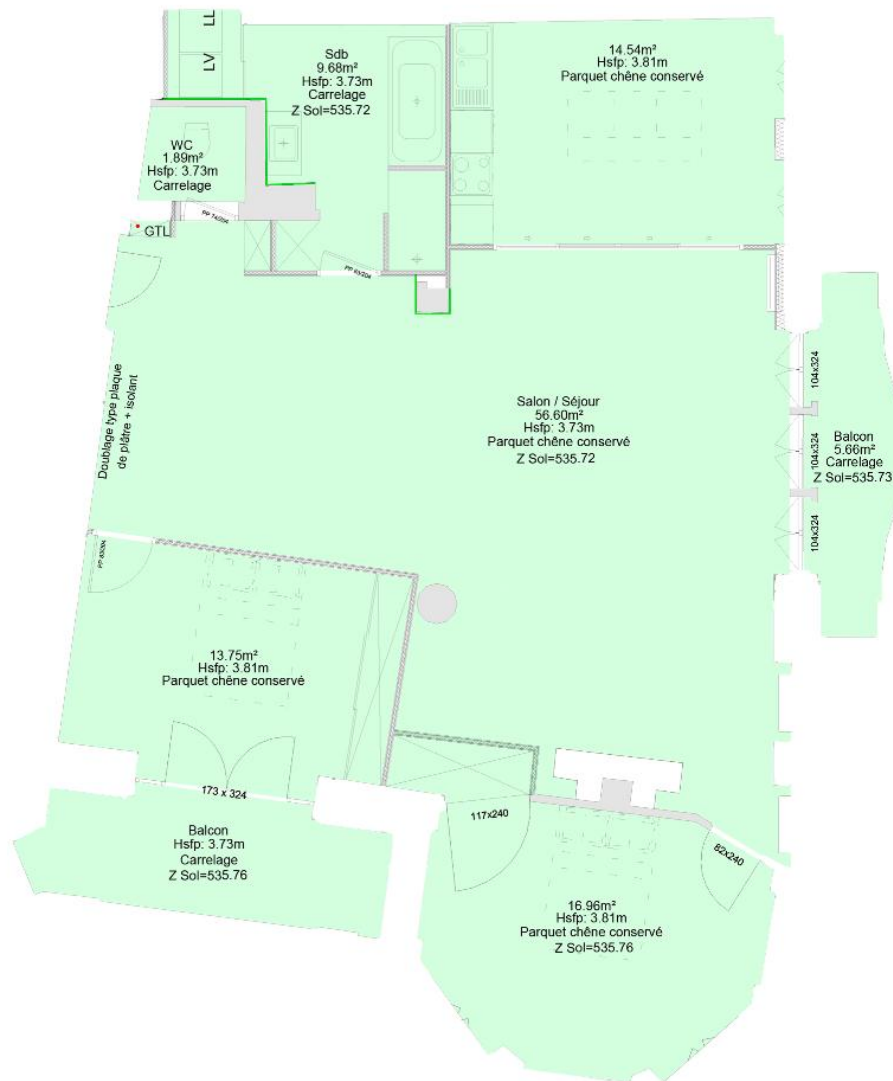
T3/T4

LGT 6

PROPOSITION D'AMÉNAGEMENT
surfaces indicatives après travaux

Salon / Séjour	56.60 m ²
Salle de bains / WC	11.57 m ²
Balcons	9.39 m ²
Chambres	30.71 m ²
Cuisine	14.54 m ²

Surface 113.68 m²



8 Rue Richelândière
42000 Saint-Étienne

