

ÉTAGE 5

T3 DUPLEX

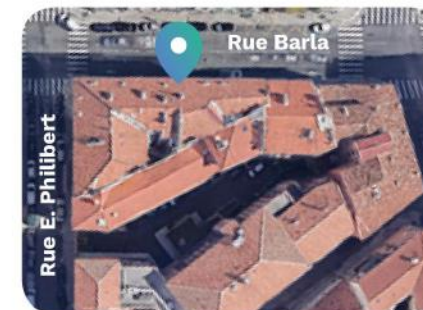
Lot 52

PROPOSITION D'AMÉNAGEMENT
surfaces indicatives après travaux

Séjour/cuisine	23,11 m ²
Chambre	10,62 m ²
Bureau	7,16 m ²
Salle de bains	3,50 m ²

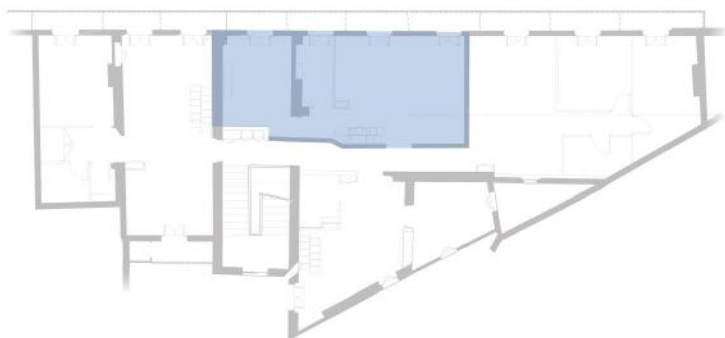
Surface 44,39 m²
Balcon 7,40 m²

Surface < 1,80 m
• Bureau 7,10 m²



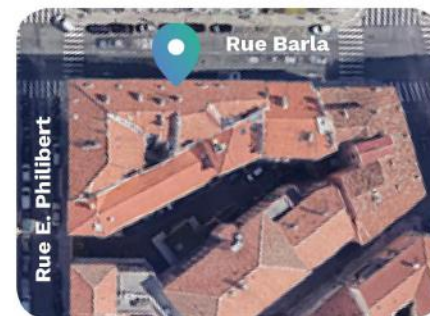
18 rue Barla - 06300 Nice

Rue Barla

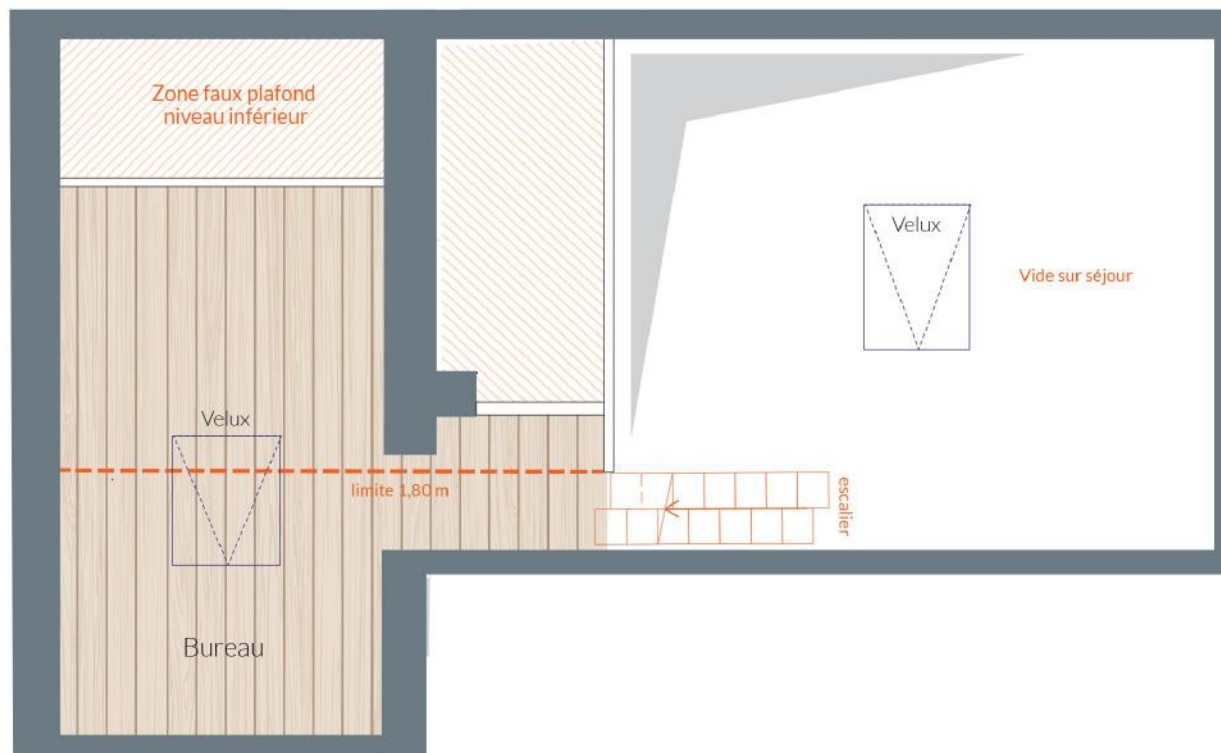


ÉTAGE 5 bis T3 DUPLEX Lot 52

PROPOSITION D'AMÉNAGEMENT



18 rue Barla - 06300 Nice



Rue Barla

